

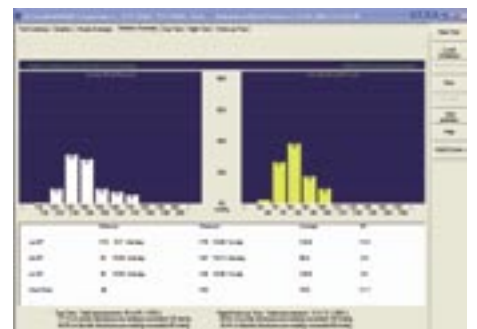
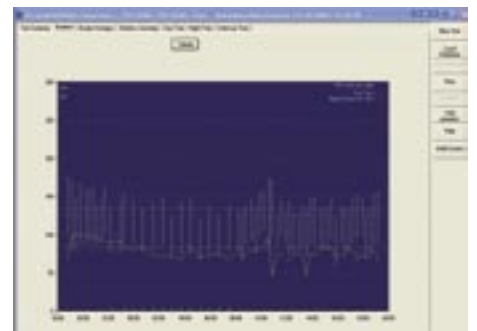
# CardioSoft Ambulatory Blood Pressure with TONOPORT V

Providing quality blood pressure assessment

The CardioSoft™ Ambulatory Blood Pressure (ABP) application provides a software solution for monitoring BP over extended periods of time. Easy to program and simple to set up, the TONOPORT™ V module easily attaches to your patient. It provides comprehensive blood pressure data in textual and graphical displays with user-definable settings. The module simply connects to your PC so you can quickly download recorded data.

The TONOPORT V module can be programmed to take BP readings at exact intervals or at random times. Day and night programming options ensure accurate NIBP readings and analysis. Furthermore, its compact, lightweight design, integrated low-noise pump and user-definable settings, such as adjustable inflation pressure control, make it comfortable for your patients to wear and operate.

At the conclusion of the monitoring period, the data is downloaded and the clinician can see comprehensive data, including 24-hour blood pressure trends, averages and statistics for both day and night summaries. The textual and graphical displays enable you to print, store or modify records as you need them. The application's flexible reporting capabilities allow physicians to review reports in multiple formats ensuring accurate diagnosis. Additionally, CardioSoft's Windows®-based environment provides a point-and-click user interface, saving you time and simplifying report generation.



Specifications		
<b>Technical</b>		
Microprocessor	P80C558EFB	
Memory	128 x 8 bit (= 1 Megabit) EEPROM	
	512 x 8 bit (= 4 Megabit) EEPROM	
Measuring range	Systolic pressure	60-260 mmHg
	Diastolic pressure	40-220 mmHg
	Median pressure	50-260 mmHg
Heart rate (HR)	35-240 beats per minute	
Acquisition period	Up to 30 hours or 200 measurements	
Battery	2 size AA NiMH rechargeable batteries, 1.2 V ≥ 1500 mAh Optional 2 size AA alkaline batteries	
Battery charger	Universal battery charger: wide range input voltage 100...240 V AC, 50...60 Hz; Recharging time: 2 to 3 hours	
<b>Environmental</b>		
Operation	Temperature	10-40°C (50-104°F)
	Relative humidity	30-75%, non-condensing
	Atmospheric pressure	700-1060 hPa
Transport and storage	Temperature	-10-70°C (14-158°F)
	Relative humidity	10-90%, non-condensing
	Atmospheric pressure	500-1060 hPa
Dimensions and weight	Height	99 mm
	Width	80 mm
	Depth	27 mm
	Weight	199 g with rechargeable batteries
Medical device	CE-0482	

TONOPORT™ V is in accordance with the British Hypertension Society Test Protocol (BHS) requirements.



[www.gehealthcare.com](http://www.gehealthcare.com)



©2005 General Electric Company – All rights reserved.

General Electric Company reserves the right to make changes in specifications and features shown herein, or discontinue the product described at any time without notice or obligation.

GE, GE Monogram, TONOPORT™ and CardioSoft™ are trademarks of General Electric Company.

Windows® is a trademark of Microsoft Corporation.

GE Medical Systems Information Technologies, a General Electric company, going to market as GE Healthcare.